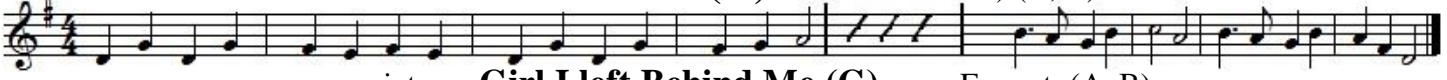
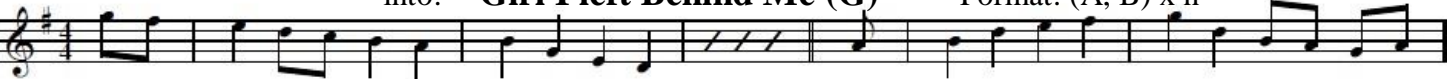
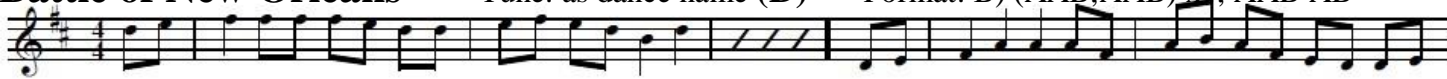

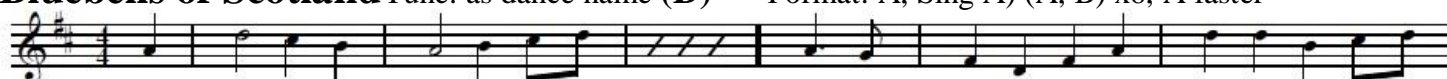



Acton Stick Dance Tune: **Not For Joe (G)** Format: A) (A, B) x n



into: **Girl I left Behind Me (G)** Format: (A, B) x n


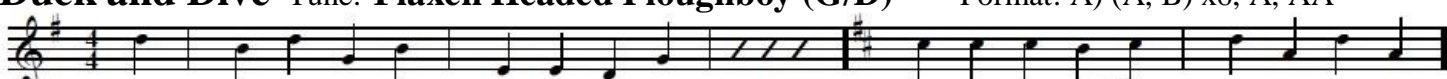
Battle of New Orleans Tune: as dance name (D) Format: B) (AAB,AAB) x4, AAB AB


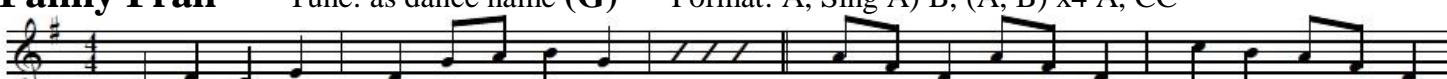
Black Joke Tune: as dance name (G) Format: A) (AA, B) x6


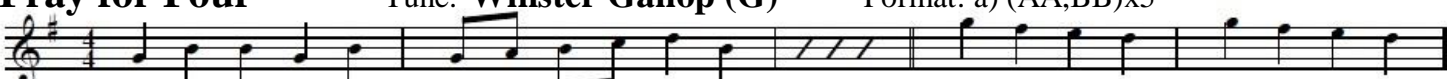
Bluebells of Scotland Tune: as dance name (D) Format: A, Sing A) (A, B) x6, A faster



Come Landlord Tune: as dance name (G) Format: A, Sing A) (A, B) x6, double time B



Constant Billy Tune: as dance name (G) Format: A, Sing AB) (AA, B) x6


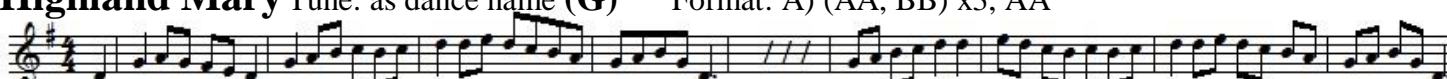
Duck and Dive Tune: **Flaxen Headed Ploughboy (G/D)** Format: A) (A, B) x6, A, AA



Fanny Frail Tune: as dance name (G) Format: A, Sing A) B, (A, B) x4 A, CC


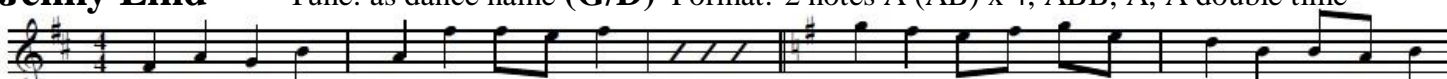
Fray for Four Tune: **Winster Gallop (G)** Format: a) (AA, BB) x5



From Night to Morn Tune: as dance name (G) Format: A) (A, BB) x4


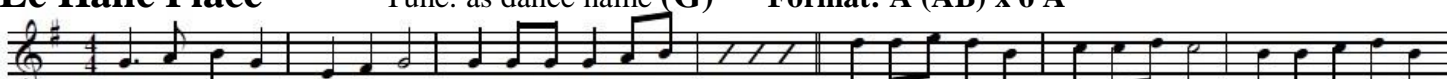
Hampshire Redhead Tune: **Wednesday Night Polka (G/Em)** Format: b) (AA, BB) x n, a



Highland Mary Tune: as dance name (G) Format: A) (AA, BB) x3, AA


Or: **Young Collins (G)** Format: A) (AA, BB) x3, AA


Jenny Lind Tune: as dance name (G/D) Format: 2 notes A (AB) x 4, ABB, A, A double time


Lads a Bunchum Tune: **What a Fool I be (G)** Format: AA, Sing AA) (AA, BB) x6


Le Halle Place Tune: as dance name (G) Format: A (AB) x 6 A


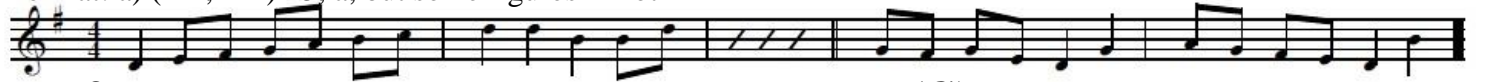
Lollipop Man Tune: as dance name (G) Format: (A BBB) x3 A


Market Raisin Tune: **Just as the Tide was Flowing** Format: a) (AB)(AB)(AAB)(AB)(AB)

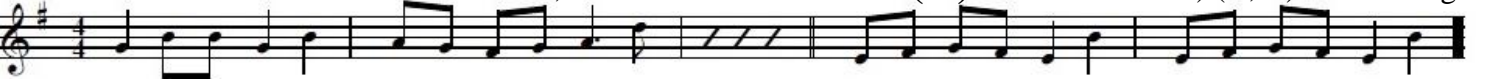


Much Wenlock Tune: **White Ladies Aston & Much Wenlock (G)**

Format: a) (AB, AA) x5, a, but some figures A not AA



Not for Joe Tune: as for **Acton**, or **Rochdale Coconut (G)** Format: B) (A, B) x5 + ending



Nutting Girl Tune: as dance name (G) Format: A) (A, BA) x4, A



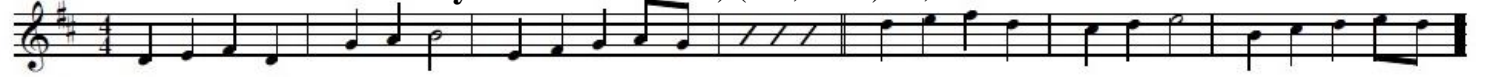
Ring of Bells Tune: as dance name (G/D) Format: 2 notes (A, BB) x 4, AA, BBB



Rose Tree Tune: as dance name (G) Format: A) (AA, BBB) x3, AA



or **Banbury Bill** Format: A) (AA, BBB) x3, AA



Sheepskins Tune: **3 Jolly Sheepskins & Blue Eyed Stranger (G)**

Format: A) A (BB AA CC) x3 and continue in lead off



Shepherd's Hey Tune: as dance name (G) Format: A) sing AA) (AA, B) x4, (AA)



Sheriff's Ride Tune: **Rag Taggle Gypsy** Format: A)AB AAB AB AAB



Skirmish of Wickham Square Tune as for **Fray for Four** above

Speed the Plough Tune: as dance name (G) Format: AA) (AA BB BB) x3 AA



Sweet Jenny Jones Tune: as dance name (D) Format: A, Sing A) (ABA) x6



Three Musketeers Tune: **British Grenadiers (G)** Format: AA) (AA, BB) x7

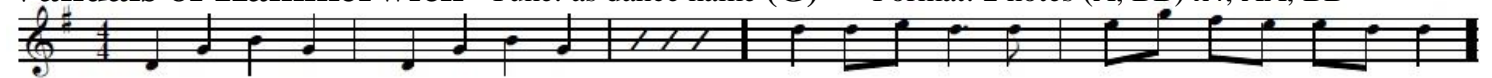


Tumbledown Dick Tune as for **Lollipop Man** above

Upton on Severn Stick Dance Tune: **Twin Sisters (G)** Format: A) (A, BB) x6



Vandals of Hammerwich Tune: as dance name (G) Format: 2 notes (A, BB) x4, AA, BB



White Hart Tune: **Fairy Dance (G)** Format: A) (AA BB)x4

